

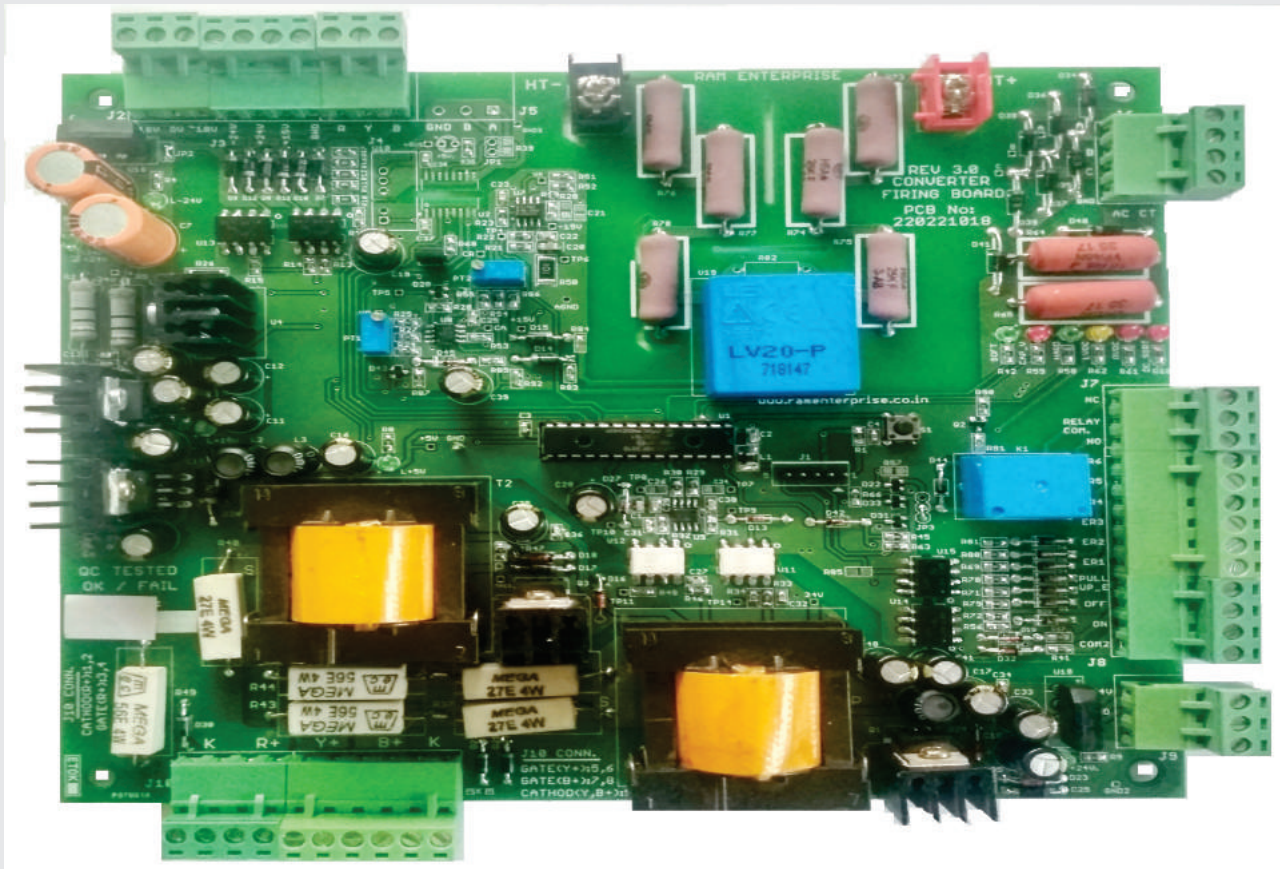
RAM ENTERPRISE HALF CONTROLLED SCR FIRING CARD

APPLICATIONS

PART CODE: 220221018

- Mainly used as Soft Starter to avoid passive components.
- Replacement of Diode bridge rectifiers in all circuits.

FIELD PROVEN TECHNOLOGY !!



Features

- No need of pre-charge circuit - Resistor, MCCB, Relay etc.
- Over / Under Voltage protection by sensing DC Voltage.
- DC-Short detection for human safety.
- Line current sensing for trip.
- Latching with external error signals.
- Six Digital Inputs.
- One Relay output for alarm.
- High voltage, Low voltage, DC-short and Phase loss indication for easy fault debugging.
- >0.99 Power factor.
- Extremely reliable & rugged design.
- On board 5kv isolated drive circuit for SCR.
- Hardware & Software based trip setting.
- HMI interface (optional).

Protection Available on control board

1. DC over voltage and below voltage.
2. Line over current.
3. Phase loss.
4. Low line voltage trip.
5. Six digital inputs..

Environmental

Working temperature : -40 to 85 °C
Storage temperature : -40 to 90 °C

Driving Capability : ANY MAKE

All usual SCR modules up to 570A/2400V.
For more detail mail us @: info@ramenterprise.co.in

Interfacing with Control Circuit

Refer Fig 1. for details.

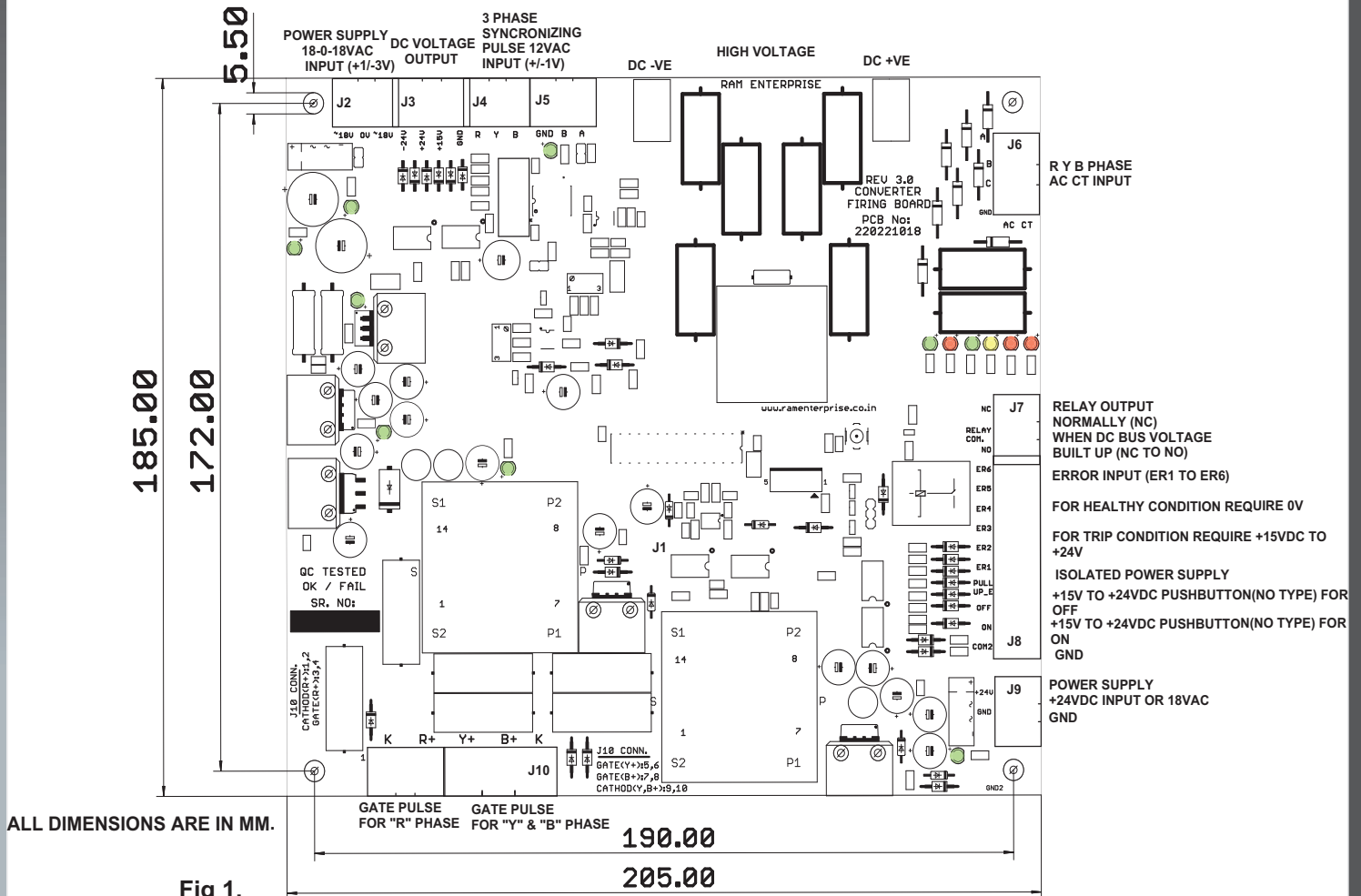
LED Indication

Power ON : Green L-24V, L+24V, L-15V, L+15V, L+5V
(Normally ON, Off during Power supply fault)
SOFT : Green (ON during soft start OFF after done)
HARD : Green (ON during hard fire done)
LVDC : YELLOW (ON during below DC voltage)
OVDC : RED (ON during over DC voltage)
DC_SHORT : RED (ON during DC short)
CAP_V : RED (ON during phase loss, external trip, over current)

ORDERING CODE - 220221018



ELECTRICAL INTERFACE



NOTE: All product names, logos, and brands are property of their respective owners.